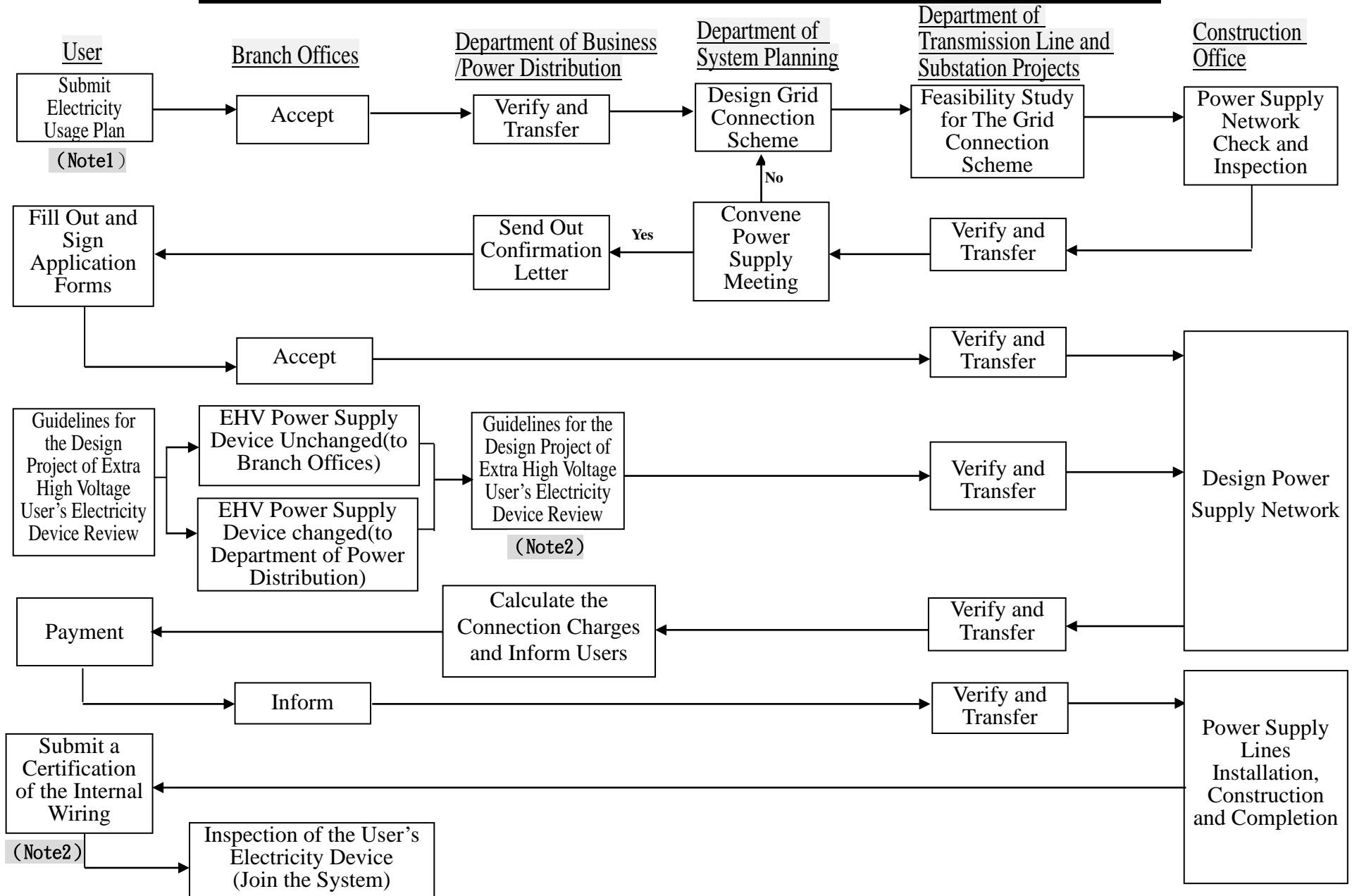


# Application Process for Extra High Voltage(EHV)



Note1 : In order to cooperate with the user to set up a new power schedule, it is recommended to submit Electricity Usage Plan in time to facilitate the planning of the power plan. EHV users are required to complete a Electricity Usage Plan as follows:

1. Apply for new application or additional application ,and the total contract capacity reaches 1,000kW or more.
2. Install ELECTRIC ARC FURNACE.
3. Install Self-Use Power Generation Equipment, apply for connecting with Network or the surplus electricity is wholesale purchased by Taipower Company.